



Single Axis Servo Control System

www.solutions4u-asia.com

The Single Axis Servo Control System could be used for servo motor control and following control experiments. The system consists of timing belt, gear box, coupler and potentiometer together with Googol Technology's motion controller. All parts are selected from industrial standard components. The system is a perfect system for fundamental experiment for motor control.

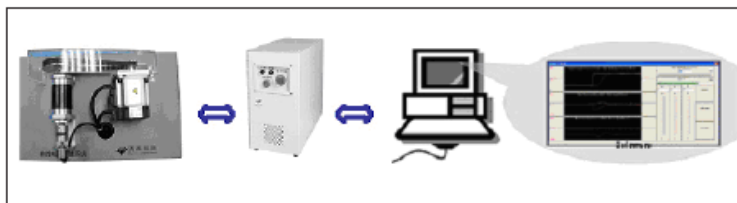
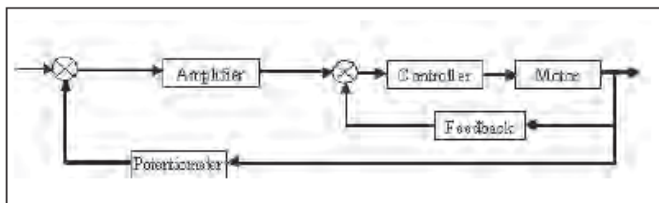


Main Feature:

- Intelligent Servo Driver
- Unlimited rotation of motor and potentiometer
- Less noise by using timing belt and gear box together
- Industrial standard DC servo motor, driver and encoder
- Experiments are based on both MATLAB® and IPM motion studio environments

Schematic Diagram

Note: The outlook of the product might be different



Reference experiments:

- Servo Motor Speed Control
- Servo Motor Position Control
- Motion Controller Programming
- System Identification
- Data Acquisition
- Motor Following

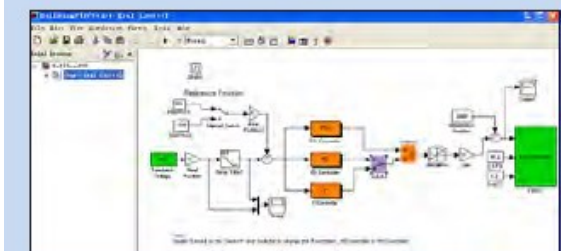
Control Software



IPM Motion Studio

Technical Specification

Size (L x W x H)	300mm x 180mm x 190mm
Servo Motor Power	35W
Encoder	2500 Pulse/Rev.
Gear Ratio of Timing Belt	1 : 4
Potentiometer Linearity	± 1.5%
Weight	< 10 Kg



MatLab Simulink

Ordering Guide

Model Number	Product Name	Description
GSMT 1012	DC Servo Single Axis Control System	<ul style="list-style-type: none"> • System Hardware • Electrical Control Box • IPM Motion Studio Control Program • MATLAB Simulink Toolbox

Distributed by:

Solutions 4U

Solutions 4U Sdn Bhd (706527-A) 72-3C, Jalan Puteri 2/4, Bandar Puteri, 47100 Puchong, Selangor, Malaysia Tel : +603-8063 9300 Fax : +603-8063 9400
 Solutions 4U Pte Ltd (200713296Z) 259 Onan Road, Singapore 424651 Tel: +65 6468 3325 Fax: +65 6764 5646 www.solutions4u-asia.com enquiry@solutions4u-asia.com